

FREE ECONOMIC ZONE IN THE CITY OF VULCANESTI

20 hectares - free buildable area



VULCANESTI CITY

The City of Vulcănești is located in the southern part of the Republic of Moldova at the interface of three states: Moldova, Romania and Ukraine. The City is the administrative centre of Vulcănești District, the part of the Autonomous Territorial Unit of Găgăuzia. The City of Vulcănești has a population of 15.2 thousand inhabitants. The overall population of the autonomy is 150 thousand inhabitants. The main economic activities of Vulcănești are manufacturing and agriculture. The different types of manufacturing are: construction netting production, wine-making, stove fuel production and other industries based on local raw materials.

EDUCATION

- vocational school

LANGUAGES

widely spoken and understood



Gagauzian



Romanian



Russian



Turkish



English

FREE ECONOMIC ZONE “VALKANES”

The Free Economic Zone (FEZ) is an excellent platform for the companies producing export-oriented commodities benefiting from customs and tax advantages.

FEZ “Valkaneș” was established in 1998 for a period of 37 years. It administrates 4 subzones with a total area of circa 200 hectares, namely in Vulcănești City (2 subzones – 107 hectares); Comrat Municipality (50.3 ha) and Ceadir-Lunga Municipality (42 ha).

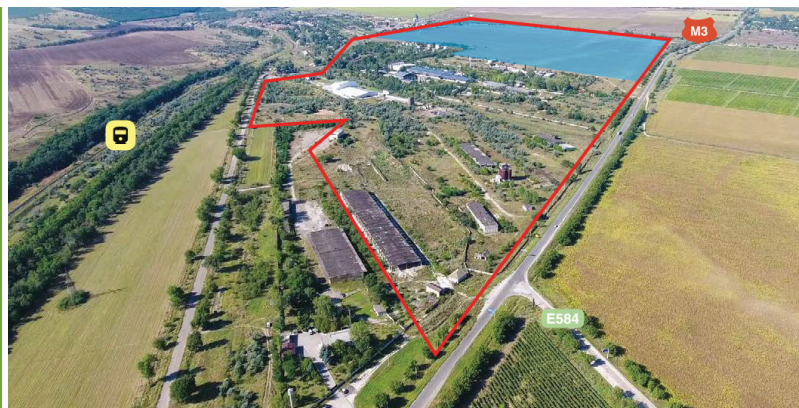
GREENFIELD, SUBZONE 1

FEZ “Valkaneș” is located in the proximity of 7 km to the East from the City center of Vulcănești. The FEZ has immediate connection to European road E584 connecting the cities of Poltava (UKR) and Galati (ROU). The subzone is delimited to the East along the railway route connecting Vulcănești with Chișinău and Black Sea port on Danube River. Out of the total area of the two subzones in Vulcănești (107 hectares), circa 20 hectares represents free buildable area on greenfield.



GENERAL INFORMATION

Location	Vulcănești
Overall Population of Autonomy	150,000 inhabitants
Total Area of the City	15.26 km ²
Organizational Form	FEZ administration
Land Ownership	Public
Land Area	107 hectares



INFRASTRUCTURE

TRANSPORT



- Immediate access to European route E583 – B class road connecting the cities Roman (ROU) and Zhytomyr (UKR), which is also national magistral road M3 Chișinău – Cimișlia – Vulcănești – Giurgiulești (MDA) – border checkpoint with Romania.

Distances:

- 183 km to Chișinău;
- 1.5 km to the nearest border checkpoint with Ukraine;
- 39 km to the nearest border checkpoint with Romania.



- Immediate access to railway route connecting Vulcănești with Chișinău and Black Sea port on Danube River.



- 195 km to Chișinău International Airport.



- Giurgiulești International Free Port is located at circa 40 km distance from Vulcănești. It is the only Danube River and Black Sea port in Moldova with direct access to international waterways.

UTILITIES



Water supply:
artesian wells; pipeline
in development



Electric power:
1 substation of **420 kWa**;
2 substations of **160 kWa** each



Natural gas:
0.125-0.25 MPa (Ø 90 mm)



Sewerage:
in development



UTILITY COSTS

Water	2.12 EUR/m³
Electric power	0.08 EUR/kWh
Natural gas	0.275 EUR/m³
Sewerage	2 EUR/m³

INVESTMENT PROPOSALS

The FEZ is designed as an economic area by the law of the Republic of Moldova to facilitate the economic development by attracting investment capital. For this purpose, special favorable terms similar to tax and customs facilities have been created. Due to these incentives, as well as to due to favorable geographic location of Moldova providing exceptional investment platform with opportunities to export to EU and CIS countries, many foreign manufacturing companies are interested in extending their production capacities in Moldova. It increases the demand for ready-to-use production halls for quick production start, but also demand for development of build-to-suit (BTS) projects. FEZ "Valkaneş" has 20 hectares of free buildable area, which allows implementing the industrial and logistic real estate development projects.

INCENTIVES OFFERED IN FREE ECONOMIC ZONES

- FEZs are connected to all important transport routes and have access to all regions through the national and international roads;
- All utilities on site;
- Corporate income tax (CIT) rate: 6%;
- Exemption from CIT for a period of 3 years, when investing 1 million USD in fix assets of the company and/or in FEZ infrastructure development (for 5 years, when investing 5 million USD);
- VAT for equipment and machinery: 0%;
- Customs procedures tax: 0.1% from customs value of goods;
- EUR/USD payment among FEZs residents;
- 10 years of state guarantee for protection against adverse changes in legislation;
- State investment protection.

FEZ RESIDENT FEES*

Tender fees	500 EUR
Registration fee	700 EUR
Fee for business activity permit	800 EUR

* a single payment for the entire period of activity in the free economic zone

LAND LEASE & PURCHASE

Land plot with all utilities can be leased with extension option. FEZ "Valkaneş" offers a long-term land lease contracts limited to lifetime of FEZ.

Land lease fee

	per 1 m²/year
FEZ land plot	0.5 EUR
Land (general regime)	0.75 EUR

Adjacent land purchase

Land plot under constructions within subzone can be purchased on state norm price.

Land purchase price	0.65 EUR/m²
---------------------	-------------------------------

CONTACTS



FREE ECONOMIC ZONE "VALKANEŞ"

📍 6 Korolenko str., Vulcanesti City, MD-5301
☎ +373 293 7-82-70
✉ freezone-valcanes@mail.md
🌐 www.freezone-valcanes.md



📍 134 Ștefan cel Mare bd., Chișinău, Republic of Moldova, MD 2012
☎ +373 22 27-36-54, +373 22 22-43-10
✉ office@invest.gov.md
🌐 www.invest.gov.md